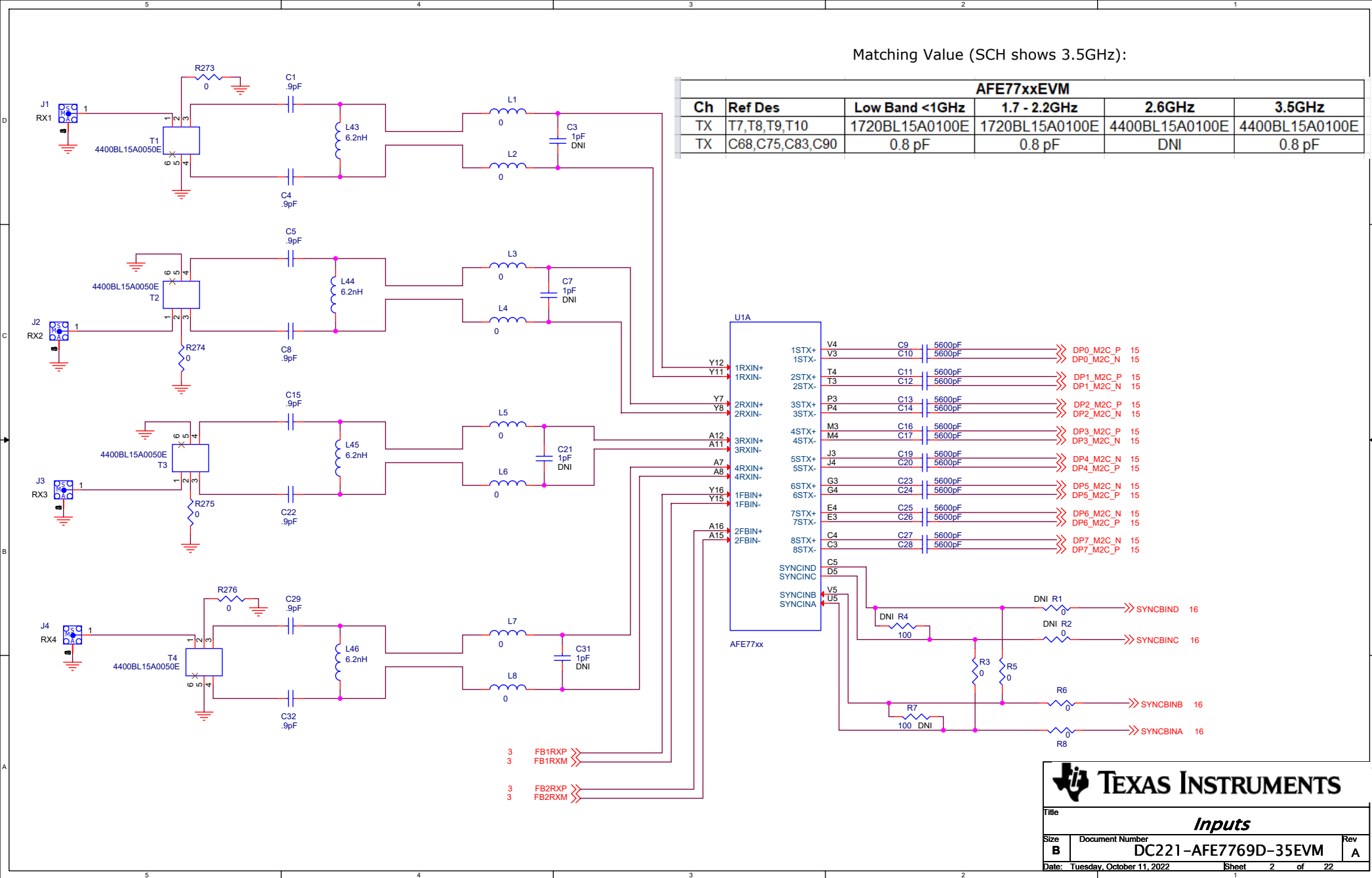



Matching Value (SCH shows 3.5GHz):

AFE77xxEVM					
Ch	Ref Des	Low Band <1GHz	1.7 - 2.2GHz	2.6GHz	3.5GHz
TX	T7,T8,T9,T10	1720BL15A0100E	1720BL15A0100E	4400BL15A0100E	4400BL15A0100E
TX	C68,C75,C83,C90	0.8 pF	0.8 pF	DNI	0.8 pF



**TEXAS INSTRUMENTS**

Title

Inputs

Size

Document Number

Rev

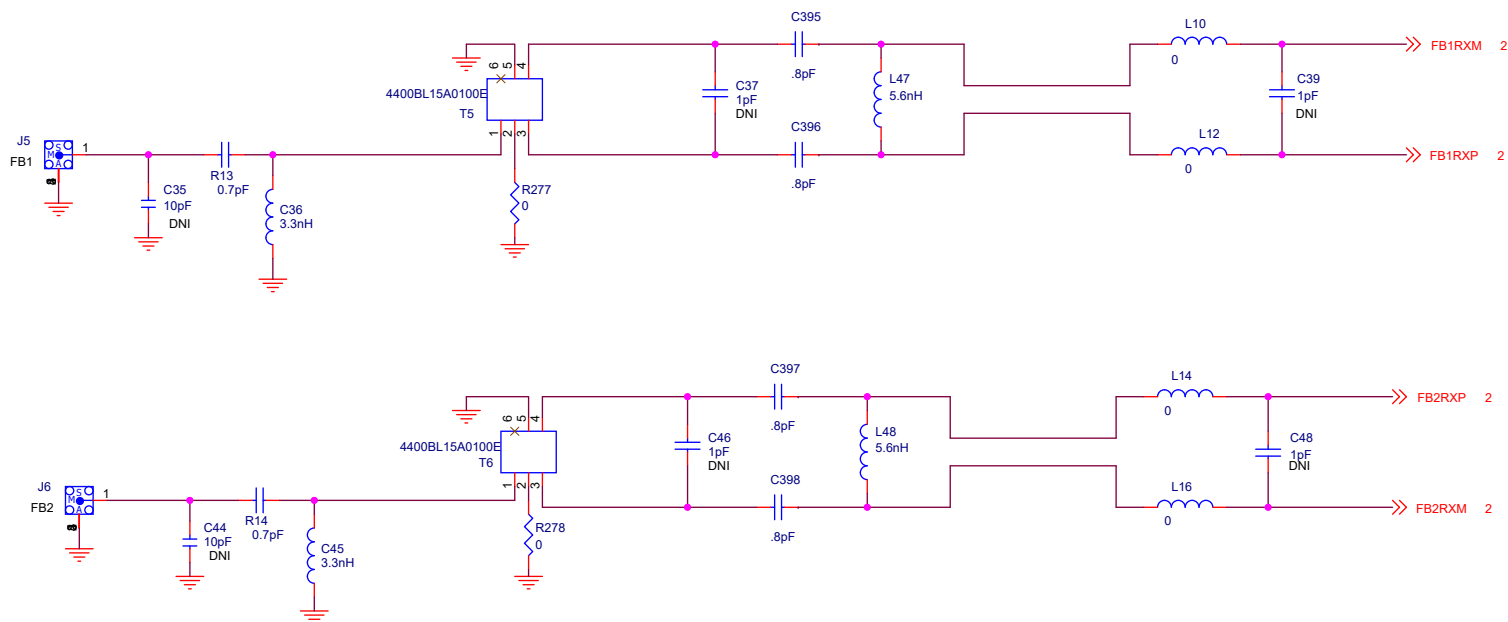
B

DC221-AFE7769D-35EVM

A

Date: Tuesday, October 11, 2022

Sheet 2 of 22

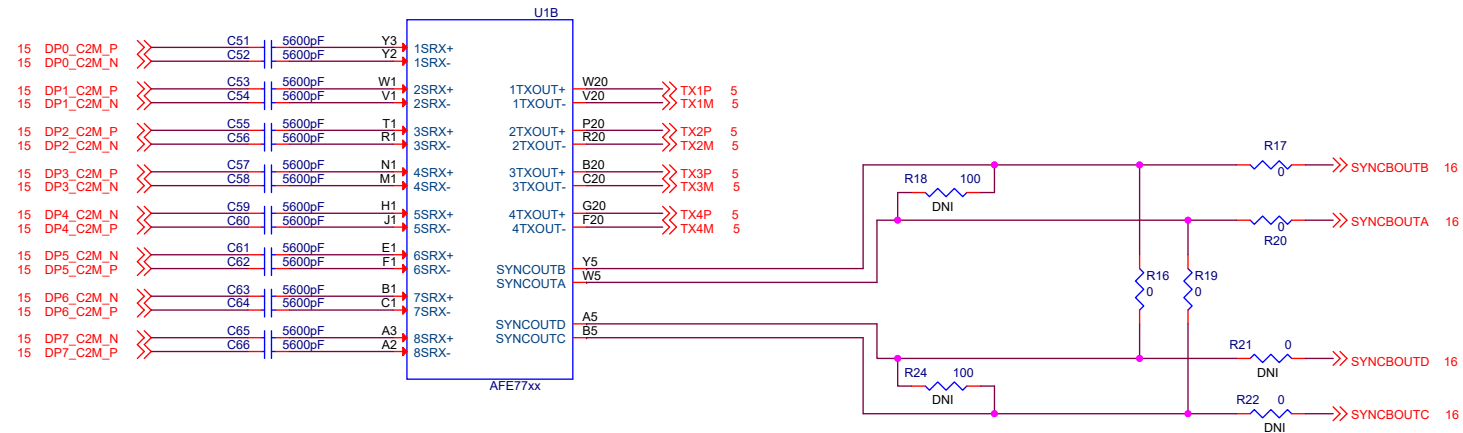


Matching Value (SCH shows 3.5GHz):

AFE77xxEVM				
Ch	Ref Des	Low Band <1GHz	2.6GHz	3.5GHz
FB	C395,C396,C397,C398	4.3pF	1.3pF	0.8pF
FB	L47,L48	22nH	22nH	5.6nH
FB	T5,T6	1720BL15A0100E	1720BL15A0100E	4400BL15A0100E



Title			<b>FB</b>	
Size	Document Number	DC221-AFE7769D-35EVM		Rev
<b>B</b>				<b>A</b>
Date: Tuesday, October 11, 2022		Sheet 3 of 22		



Matching Value (SCH shows 3.5GHz):

AFE77xxEVM					
Ch	Ref Des	Low Band <1GHz	1.7 - 2.2GHz	2.6GHz	3.5GHz
RX	C1,C4,C5,C8,C15,C22,C29,C3	18pF	3.9pF	1.6pF	0.9pF
RX	L43,L44,L45,L46	DNI	27nH	22nH	6.2nH
RX	T1, T2, T3, T4	1720BL15B0050E	1720BL15B0050E	1720BL15B0050E	4400BL15A0050E

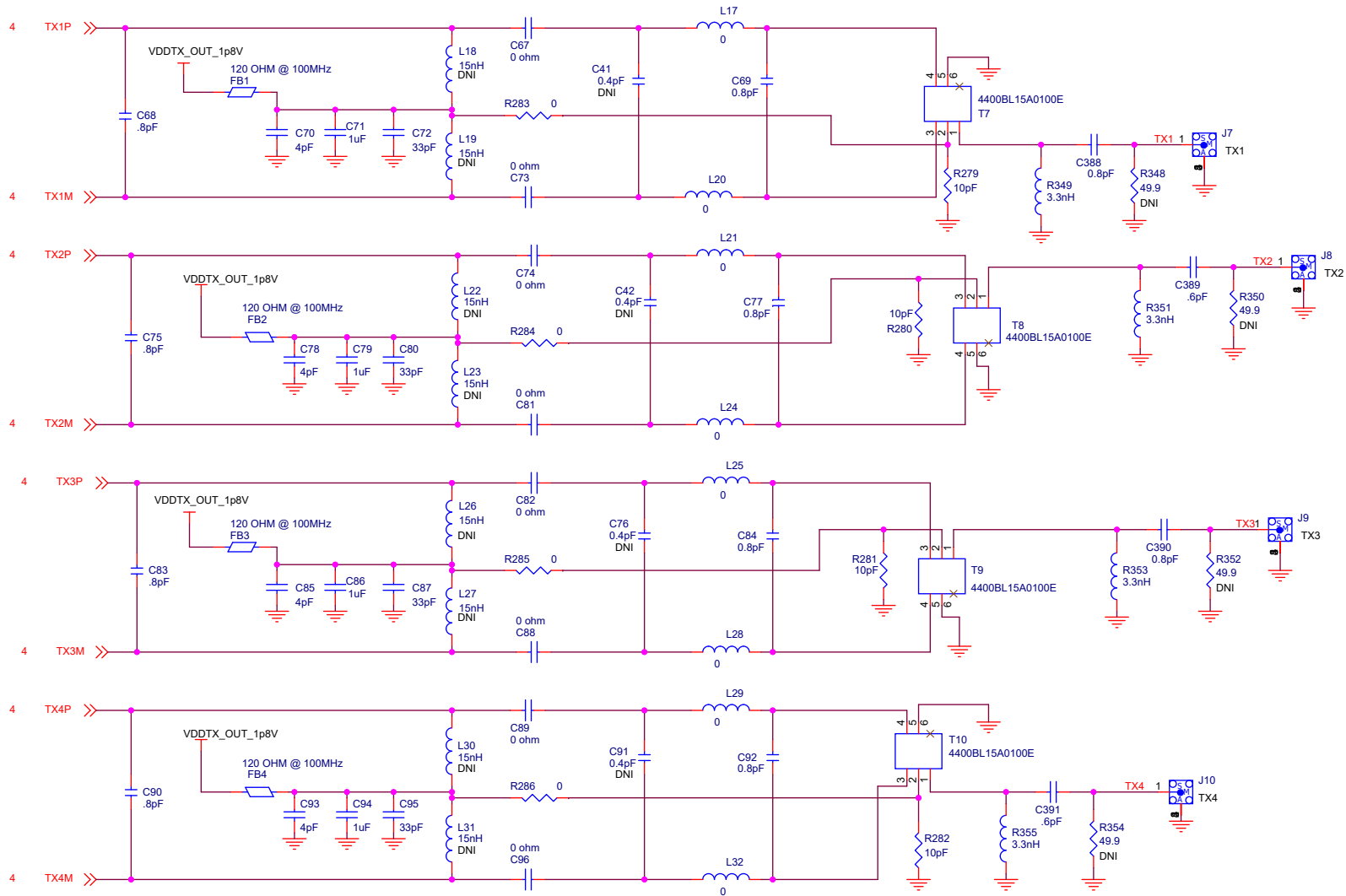
**TEXAS INSTRUMENTS**

Title

**Outputs**

Size **B** Document Number **DC221-AFE7769D-35EVM** Rev **A**

Date: Tuesday, October 11, 2022 Sheet 4 of 22



Matching Value (SCH shows 3.5GHz):

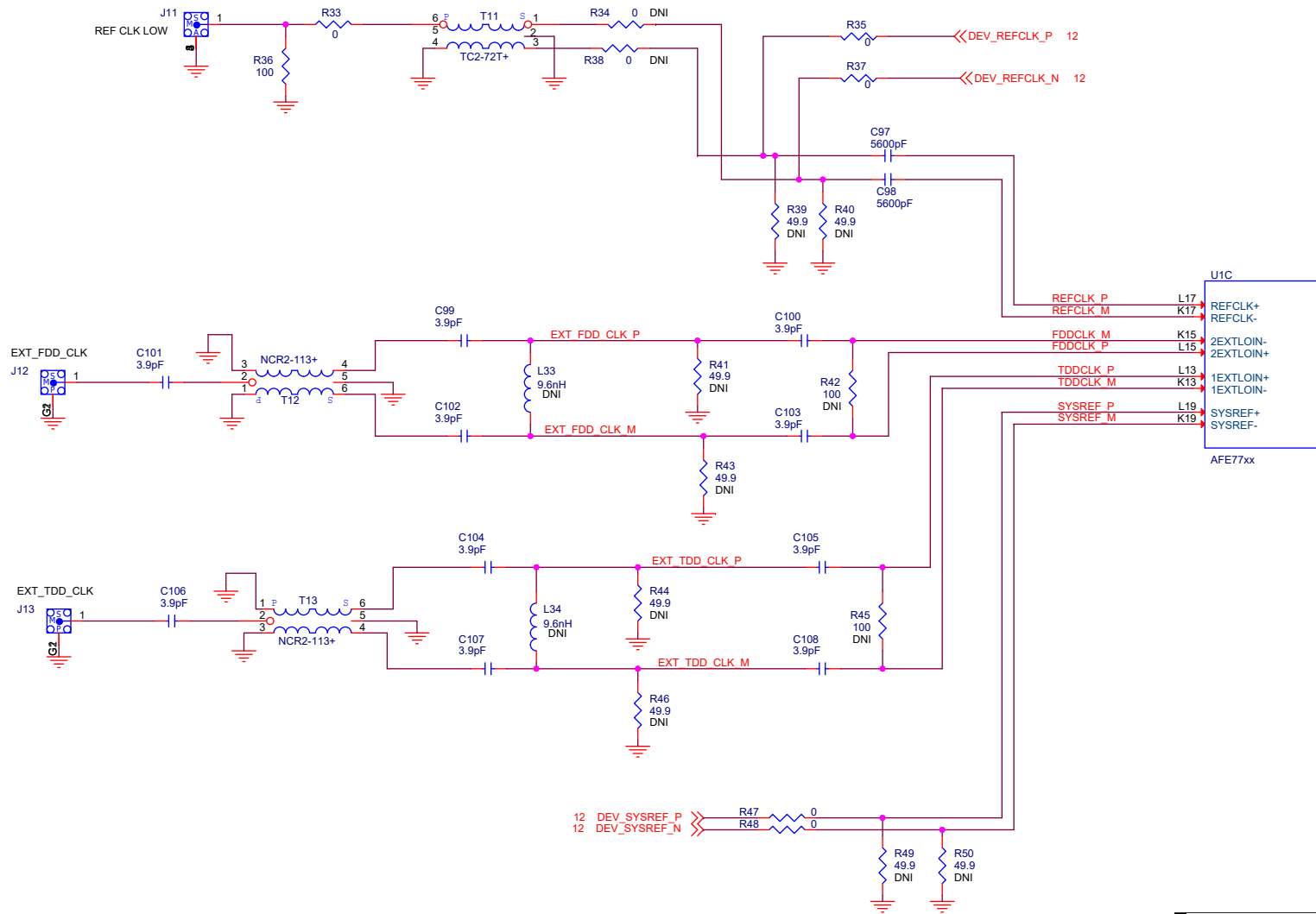
AFE7769EVM					
Ch	Ref Des	Low Band <1GHz	1.7 - 2.2GHz	2.6GHz	3.5GHz
TX	T7,T8,T9,T10	1720BL15A0100E	1720BL15A0100E	4400BL15A0100E	4400BL15A0100E
TX	C68,C75,C83,C90	0.8 pF	0.8 pF	DNI	0.8 pF

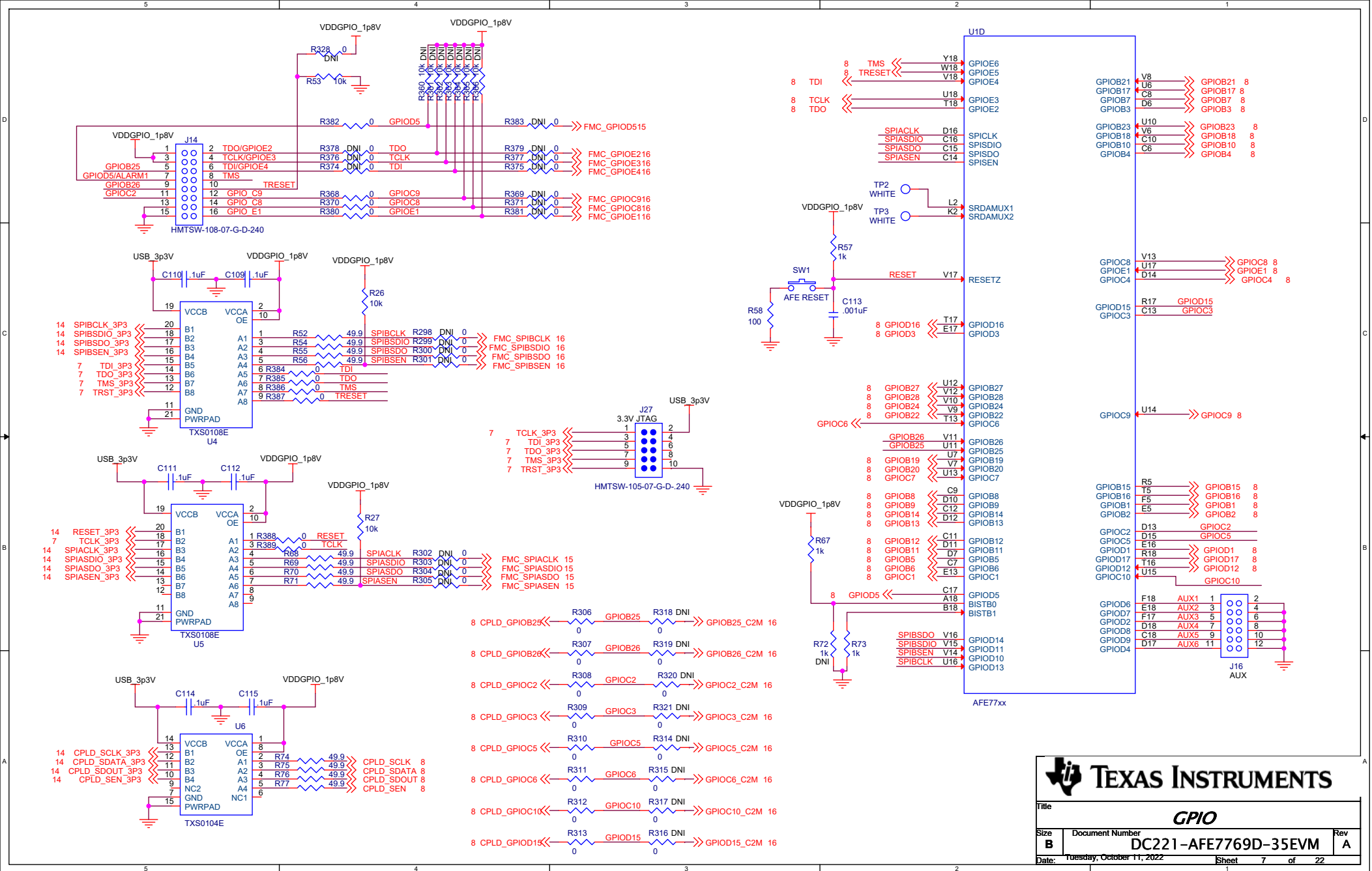
**TEXAS INSTRUMENTS**

Title: **TX Out**

Size **B** Document Number **DC221-AFE7769D-35EVM** Rev **A**

Date: Tuesday, October 11, 2022 Sheet 5 of 22

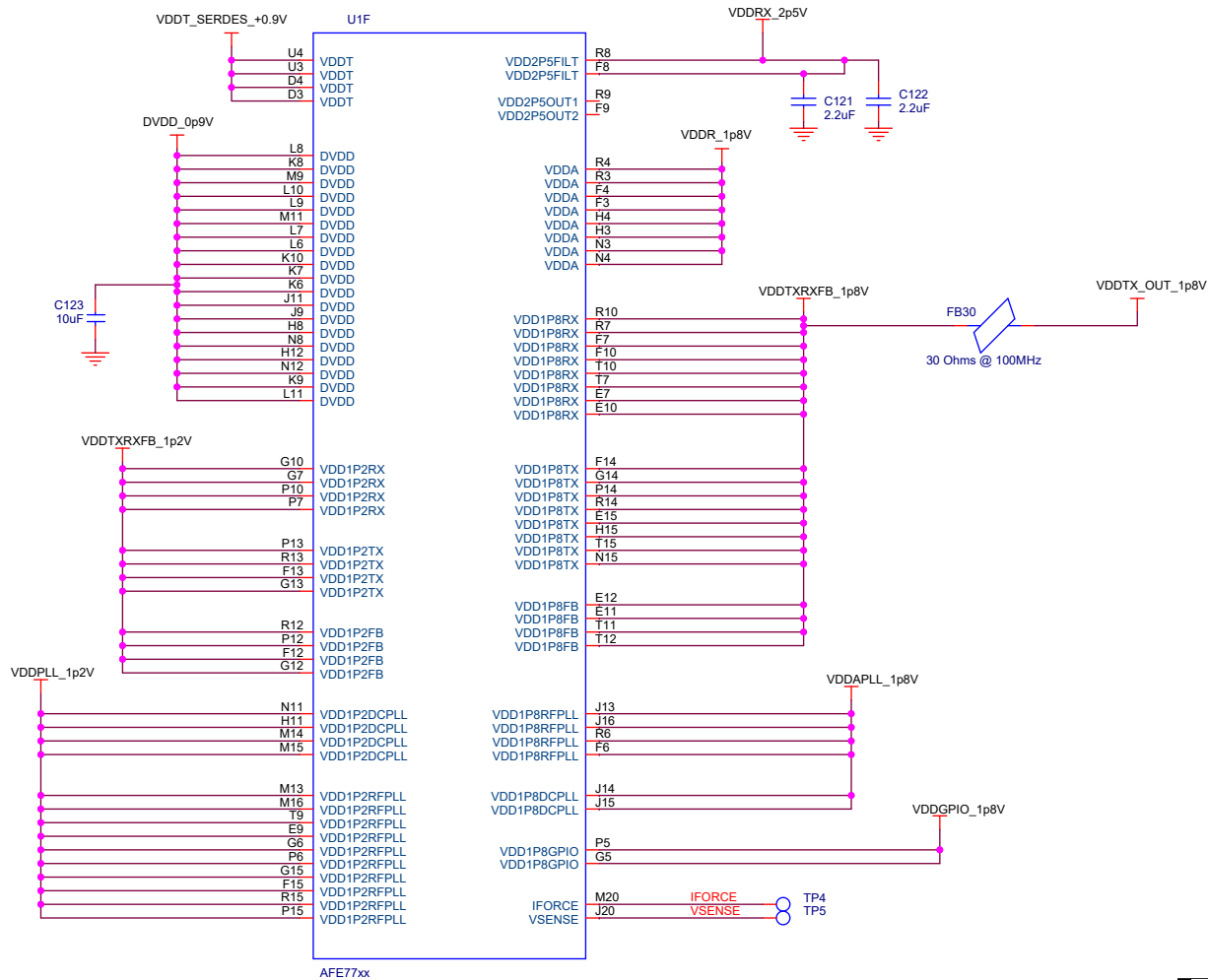




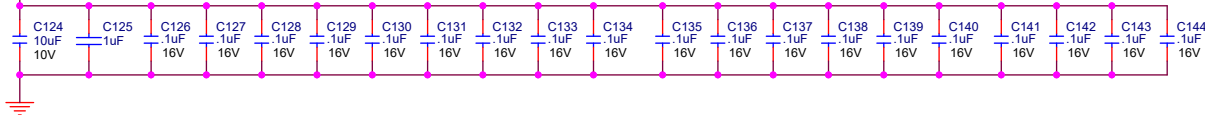
Title			
<i><b>GPIO</b></i>			
Size	Document Number		Rev
<b>B</b>	<b>DC221-AFE7769D-35EVM</b>		<b>A</b>
Date:	Tuesday, October 11, 2022	Sheet	7 of 22



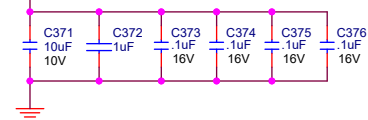




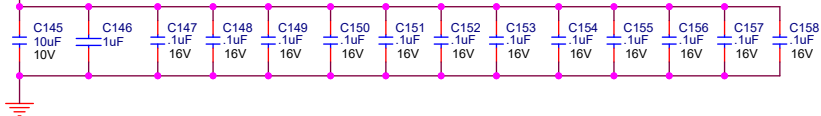
DVDD\_0p9V



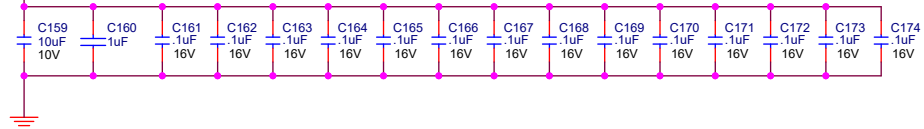
VDDT\_SERDES\_+0.9V



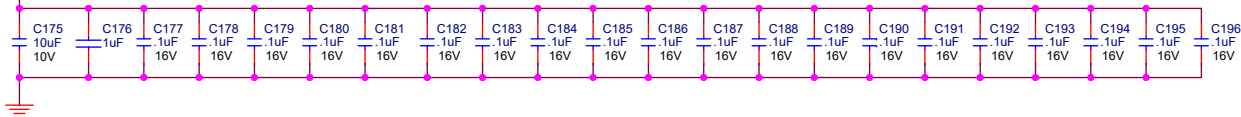
VDDTXRXFB\_1p2V



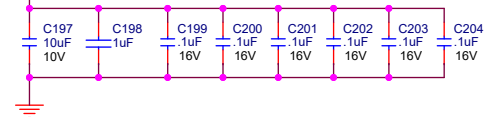
VDDPLL\_1p2V



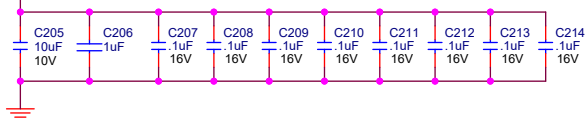
VDDTXRXFB\_1p8V



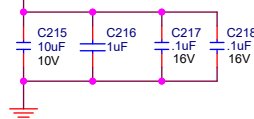
VDDAPLL\_1p8V




VDDR\_1p8V

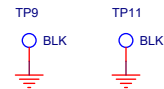
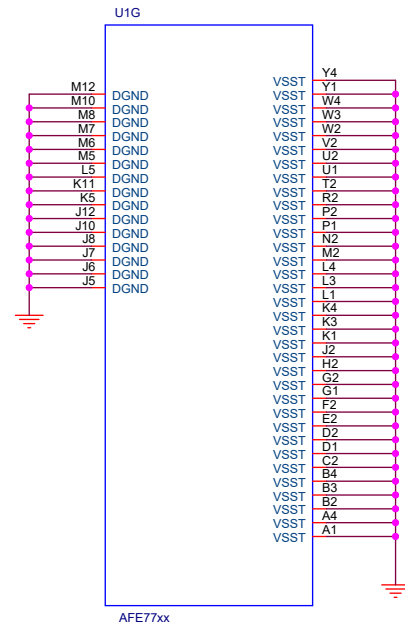
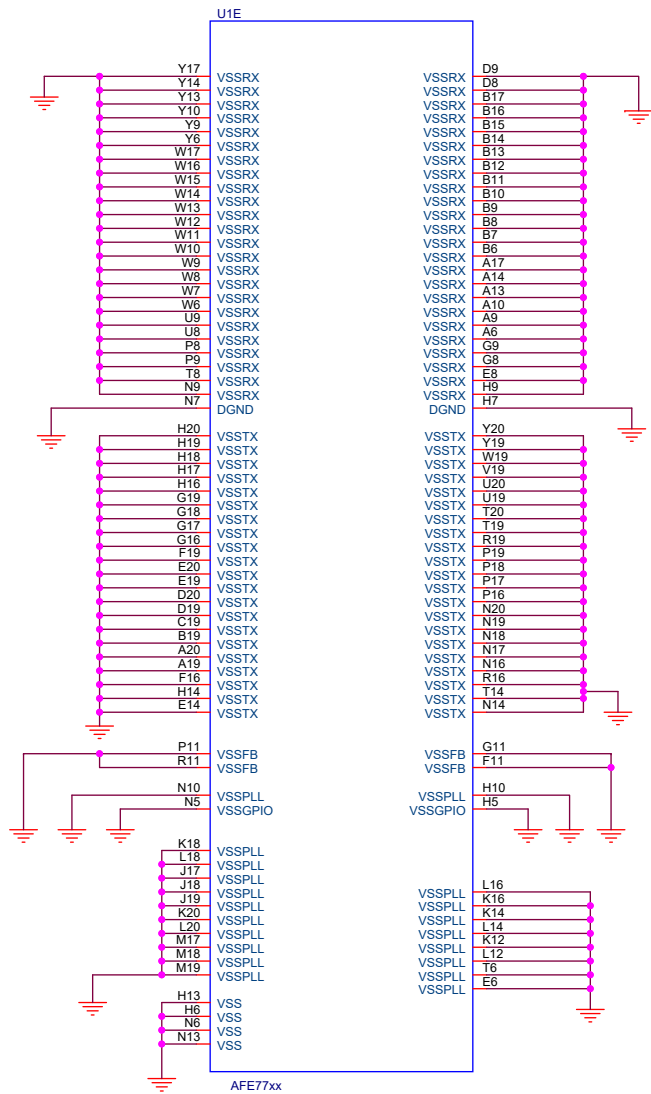



VDDGPIO\_1p8V



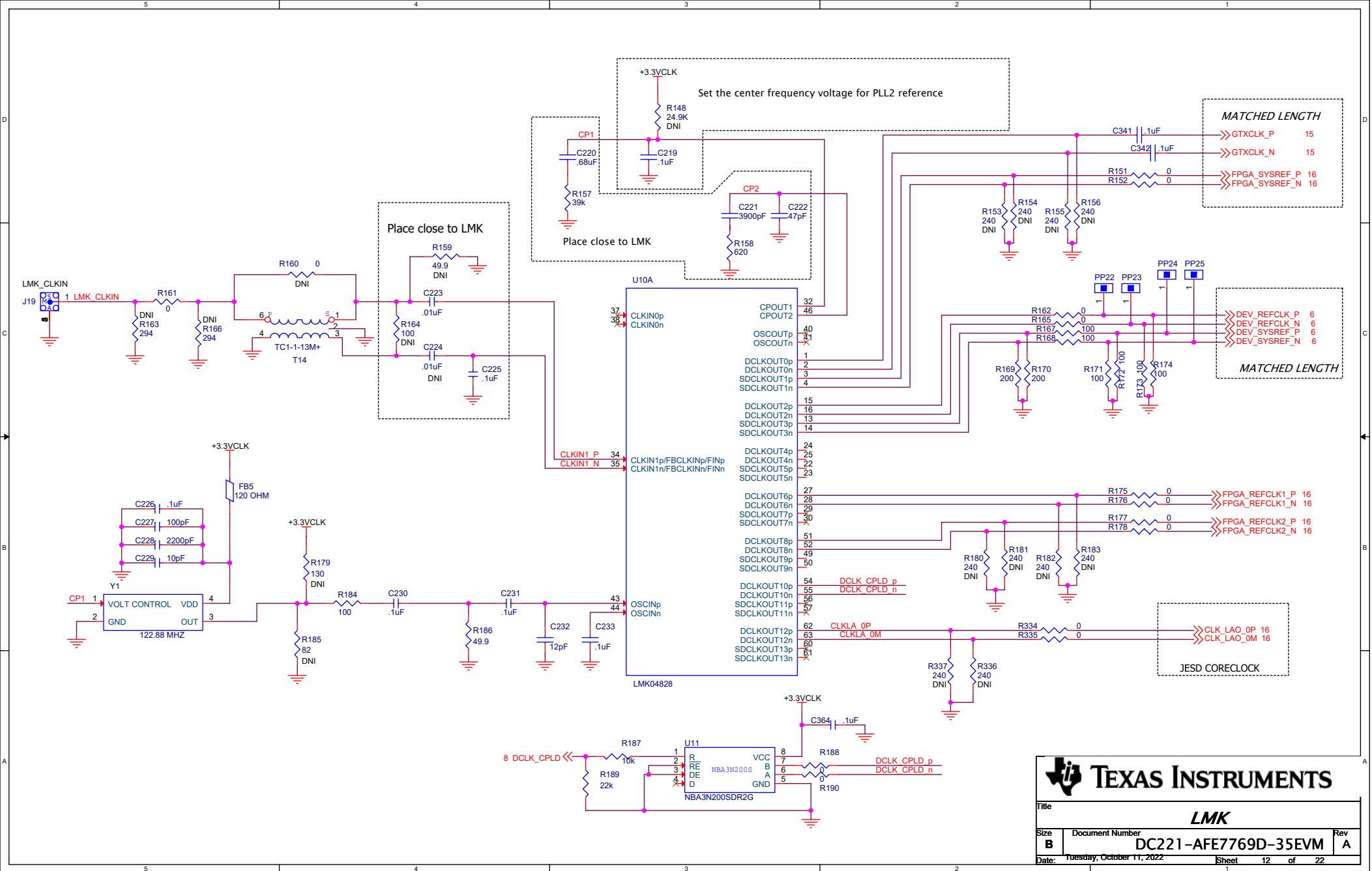
**TEXAS INSTRUMENTS**

Title		
<b><i>Decoupling</i></b>		
Size	Document Number	Rev
<b>B</b>	<b>DC221-AFE7769D-35EVM</b>	<b>A</b>
Date:	Tuesday, October 11, 2022	Sheet 10 of 22

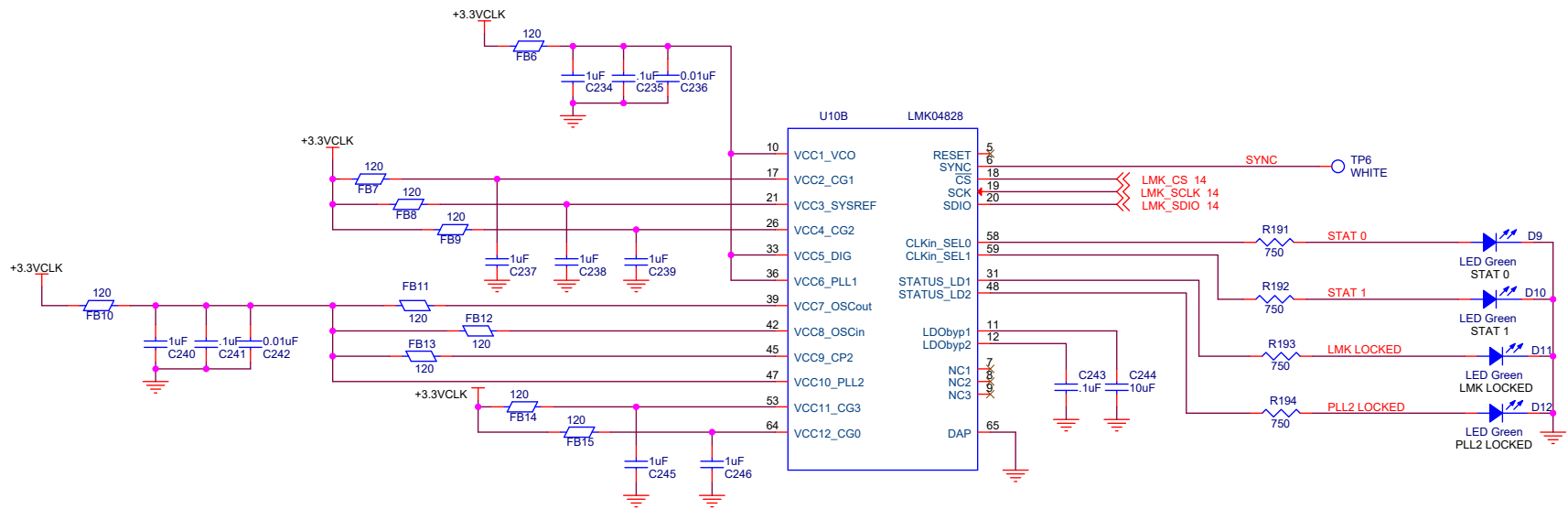


 **TEXAS INSTRUMENTS**

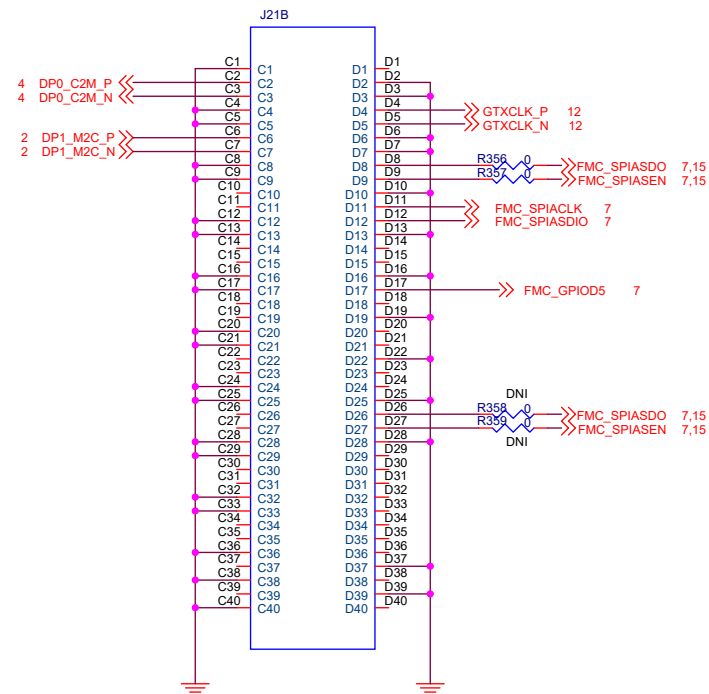
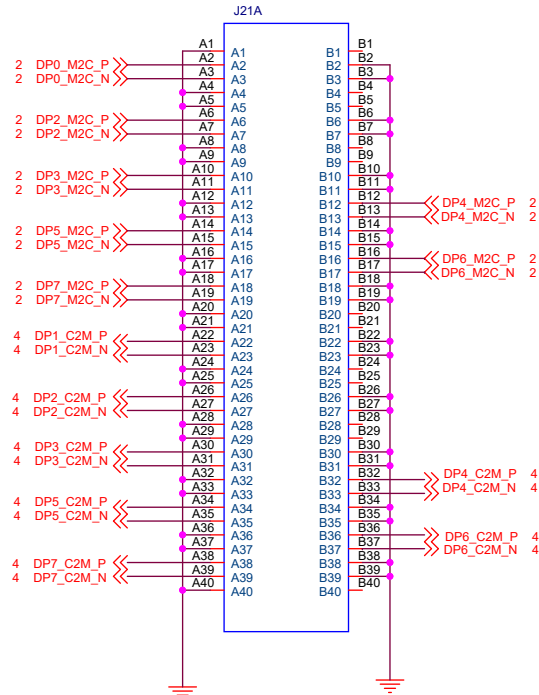
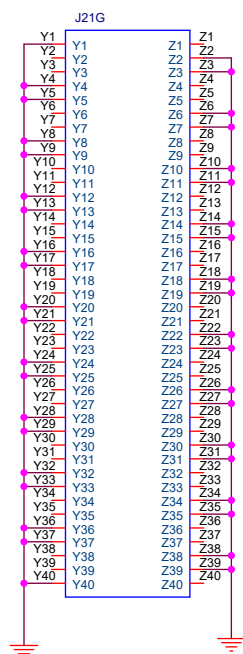
Title		
<b>AFE GND</b>		
Size	Document Number	Rev
<b>B</b>	<b>DC221-AFE7769D-35EVM</b>	<b>A</b>
Date:	Tuesday, October 11, 2022	Sheet 11 of 22




Title			
<i><b>LMK</b></i>			
Size	Document Number		Rev
<b>B</b>	<b>DC221-AFE7769D-35EVM</b>		<b>A</b>
Date:	Tuesday, October 11, 2022	Sheet	12 of 22

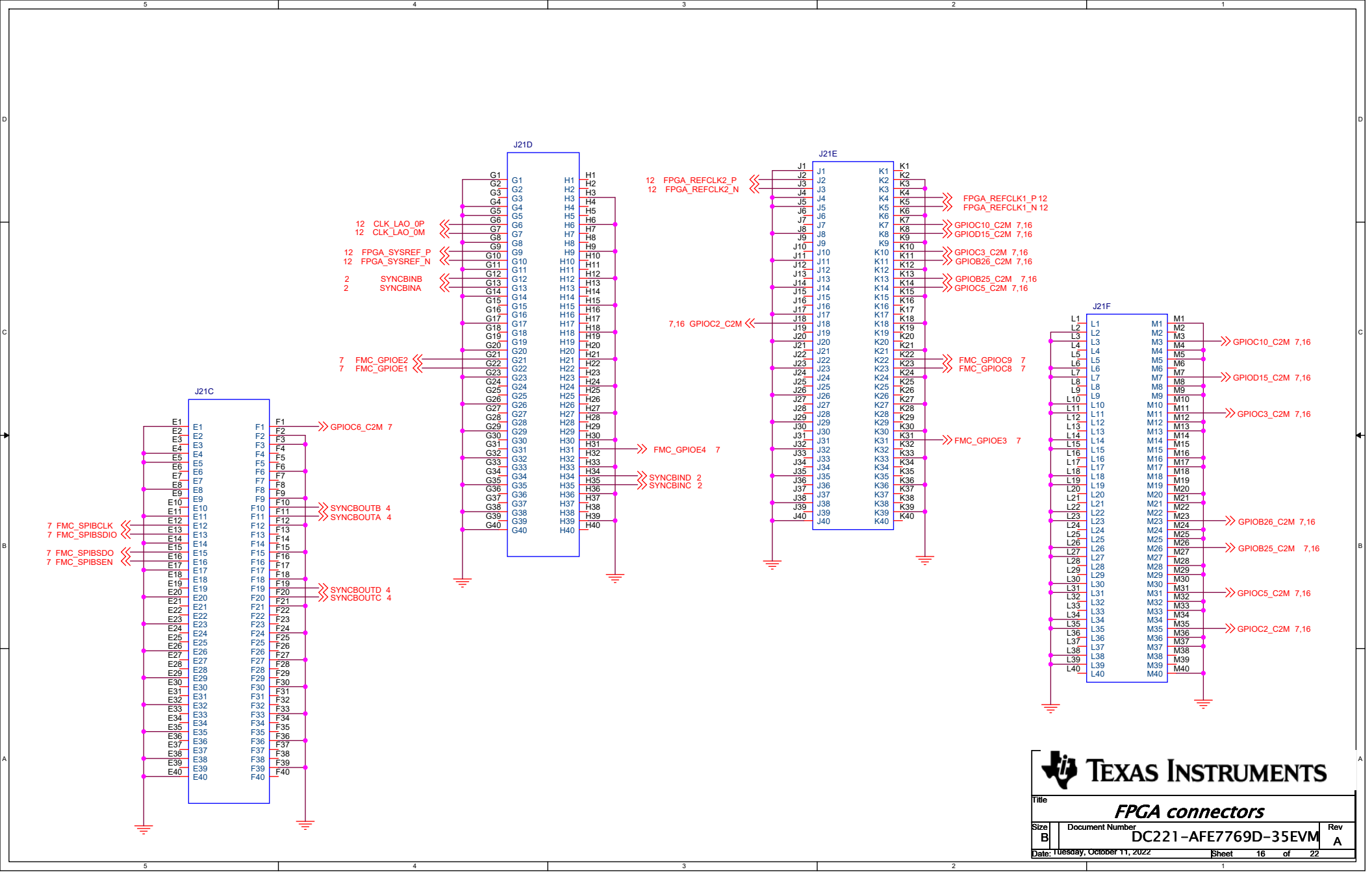






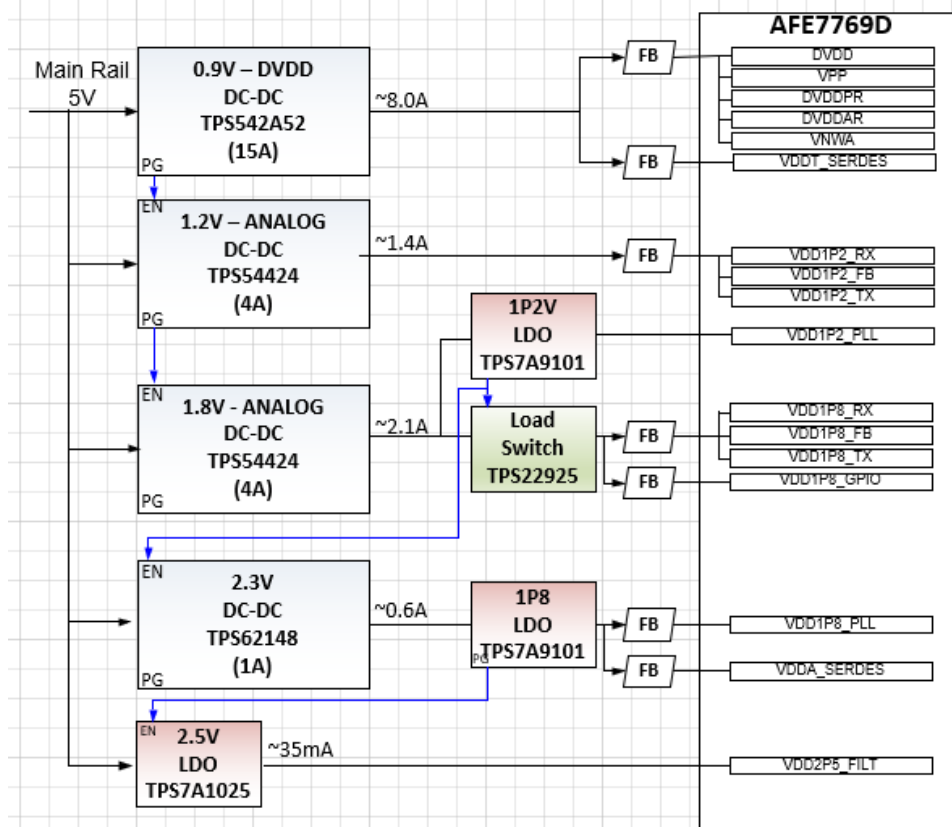
**TEXAS INSTRUMENTS**

Title <b>FMC</b>		
Size <b>B</b>	Document Number <b>DC221-AFE7769D-35EVM</b>	Rev <b>A</b>
Date: Tuesday, October 11, 2022		Sheet 15 of 22

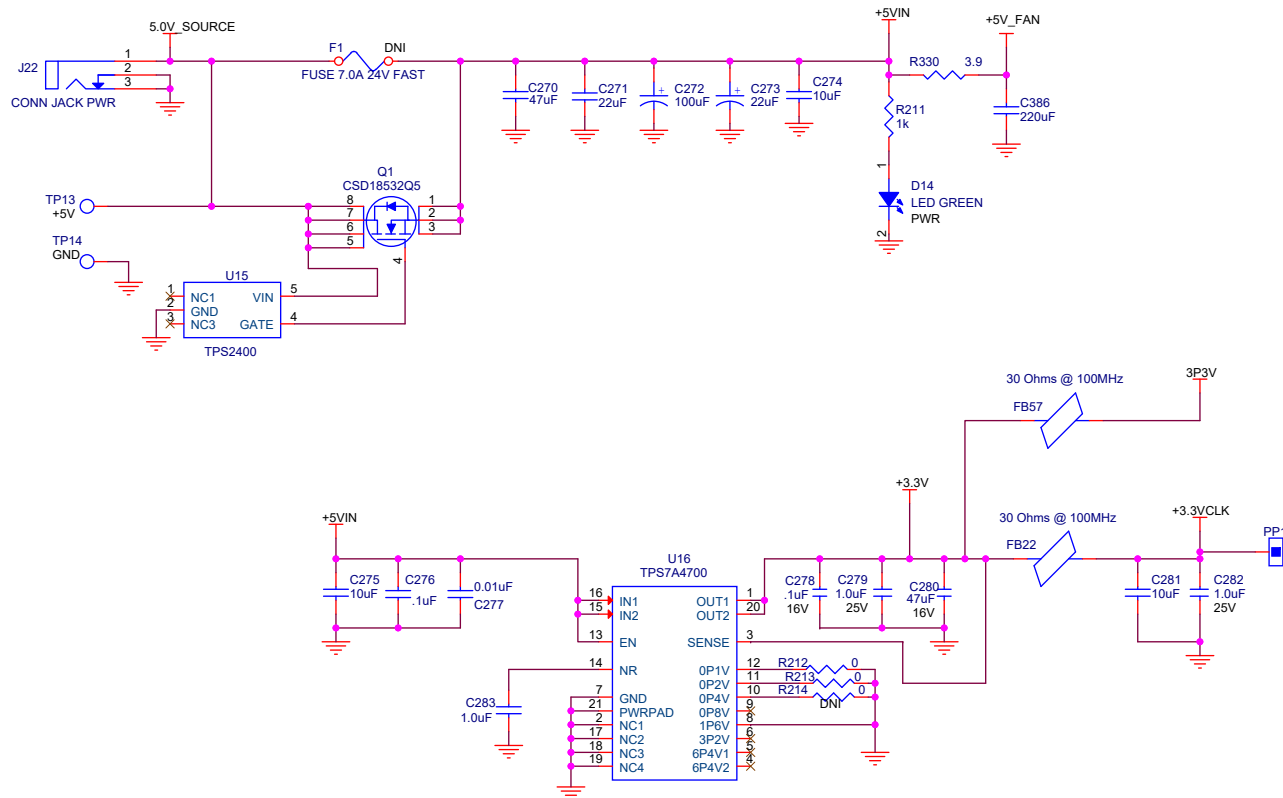




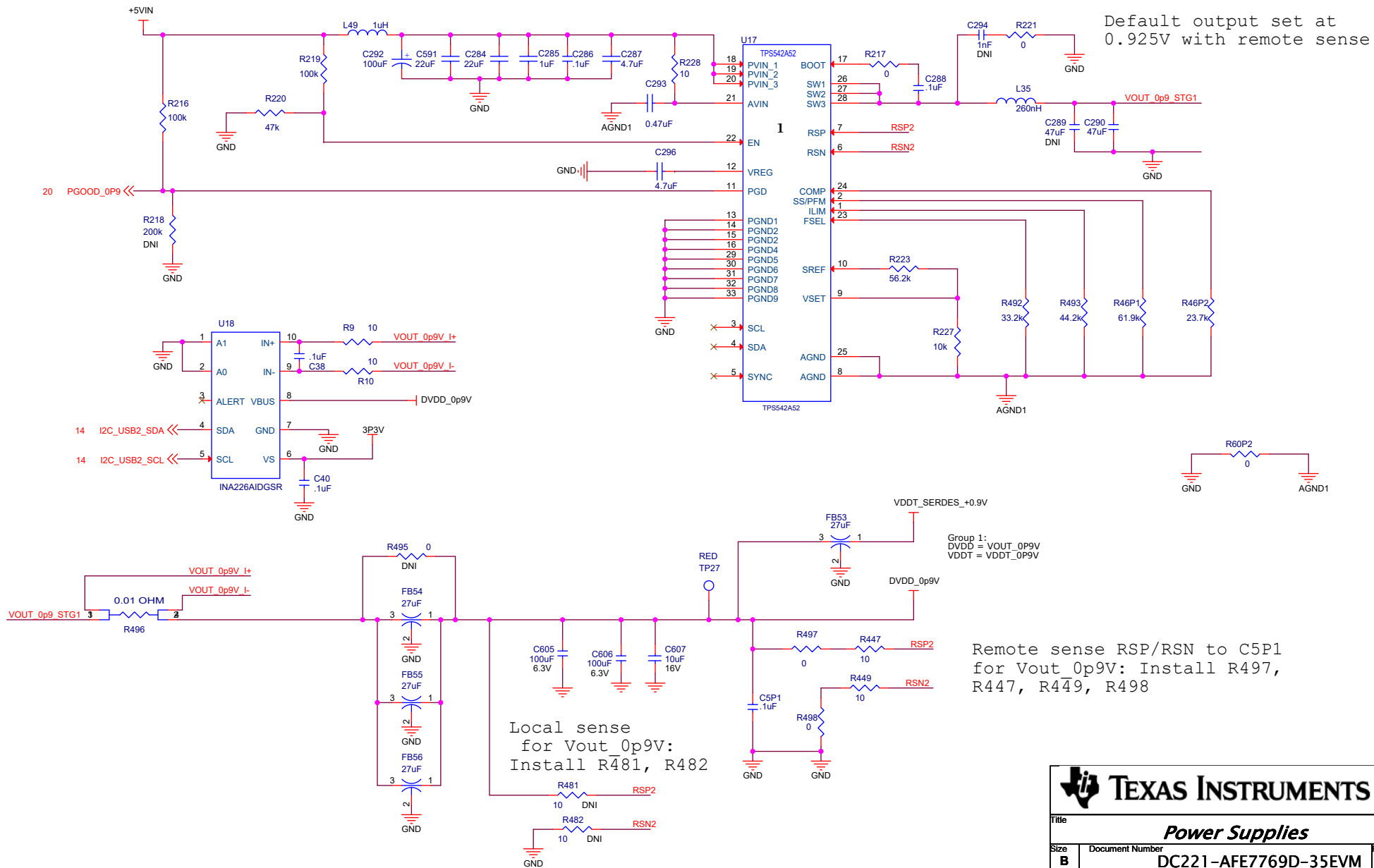
# AFE7769D Power Tree Block Diagram



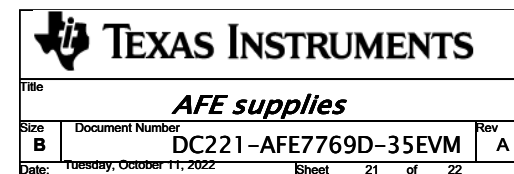
Title		
<b>Power Tree</b>		
Size	Document Number	Rev
<b>B</b>	<b>DC221-AFE7769D-35EVM</b>	<b>A</b>
Date:	Tuesday, October 11, 2022	Sheet 17 of 22



Title		
<b>Power Supplies</b>		
Size	Document Number	Rev
<b>B</b>	<b>DC221-AFE7769D-35EVM</b>	<b>A</b>
Date:	Tuesday, October 11, 2022	
	Sheet	18 of 22







MP3\_HS1  
HEAT SINK 17MM X 17MM X 19.5MM  
ATS-54170R-C1-R0

MP4  
17mm FAN FOR HEATSINK  
MF17080V1-1000U-A99

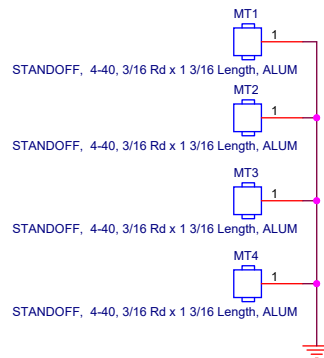
Screws, M2-0.4 x 12mm DIN 7985 PHIL Pan Head

MP6\_P1  
MECR  
Mating Connector for J23  
0022012027  
For fan wires assembly, use crimp terminal 08-50-0114

08-50-0114

08-50-0114

Z LABEL1  
AFE7769-3P5EVM

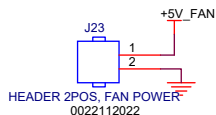


SCREW, PHIL, 4-40x3/8", SS


SCREW, PHIL, 4-40x3/8", SS

SCREW, PHIL, 4-40x3/8", SS

SCREW, PHIL, 4-40x3/8", SS



Printed Circuit Board, AFE77xx

 <b>TEXAS INSTRUMENTS</b>		
Title <b>Hardware</b>		
Size <b>B</b>	Document Number <b>DC221-AFE7769D-35EVM</b>	Rev <b>A</b>
Date: <b>Tuesday, October 11, 2022</b>	Sheet <b>22</b> of <b>22</b>	